

# iGrafx® PROCESS 2005™

iGrafx Process 2005 is ideal for:

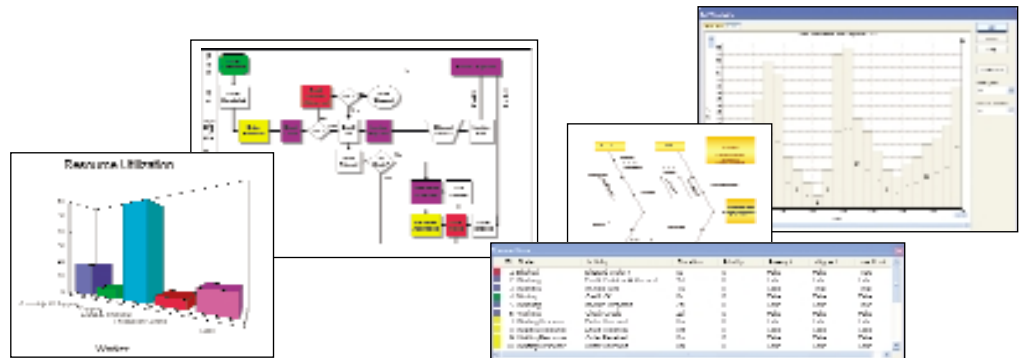
- Business Analysts
- Process Analysts
- Process Owners
- Quality Specialists
- Project Managers
- Management Consultants
- Production Teams
- Logistics Departments

Meet your objectives in:

- Business Process Improvement
- Total Quality Management
- Process Analysis

## Virtual Analysis for the Real World

*iGrafx® Process™ 2005 is a leading process analysis and simulation tool to help organizations understand and improve their processes. With powerful, intuitive analysis and comprehensive reporting capabilities, you will gain new insights into your processes to give you the competitive advantage you need in today's real world. iGrafx Process 2005 is fully compatible with the family of process excellence solutions from iGrafx.*



### Key Feature

### Benefit

Integrated Reporting

Understand change impact in real time

Hierarchical Process Maps

Improve readability and comprehension through logical design

Intelligent Swimlane® Diagrams

Experience an ROI by minimizing time to create and edit process maps

User Definable Modeling Data

Improve accuracy of results through increased resemblance of model to real-world

Multiple Scenario Analysis

Identify optimal changes through comprehensive parameter testing

Analyze Multiple Runs in a Single Report

Leverage high-impact changes through side-by-side comparisons

Import Actual Process Data

Improve accuracy of results through use of empirical data

Export Report Data

Improve understanding of test results through extensive testing in 3rd party applications

Visio® Import

Reduce development time by leveraging legacy content

Dynamic Page Size

Lack of barriers enables greater focus on capturing process knowledge

Process Guide

Reduce model development time by defining critical elements first

Simulation timeframes from 1/10 second to years

Increase scope of process improvement through a wider range of processes analyzed

Instant Web and Microsoft® Office® Publishing

Improve visibility and compliance through easy knowledge sharing

Seamless Integration with the iGrafx Family

Leverage and share organization-wide efforts and maintain central data management

## Competitive Advantage through Process Excellence

To get ahead and stay ahead in today's volatile and fast changing world demands proactive management and new methods. Delivering goods and services that simply match customer requirements is no longer safe ground. To create a business model that enables you to gain and sustain leadership and return a profit, you need solutions that will help you expose weaknesses and identify and evaluate solutions.

iGrafx Process 2005 is a leading process analysis and simulation tool that enables even the most complex processes to be understood, modeled and improved. As a cornerstone of process improvement for more than a decade, iGrafx Process has helped leading companies understand, improve, deploy and communicate best-practice processes. By targeting high-impact customer facing processes, users can greatly improve customer satisfaction, retention and returns.

With comprehensive modeling techniques combined with intelligent process mapping, iGrafx Process 2005 brings the benefits of process analysis within reach of simulation experts and non-experts alike. In a way not possible with other modeling techniques such as complex spreadsheets, iGrafx process models respond to changing schedules of resource availability, customer demand patterns or random events such as machine down time. Powerful reports help you support and communicate your findings.

The user-friendly diagramming and modeling features of iGrafx Process 2005 provide an effective and logical approach to mapping processes. iGrafx Process 2005 aids with the organization of activities into their respective departments and highlights the hand-offs between them. Activity behavior is driven by logical and helpful dialogues. Together, these and other

features have redefined business process modeling and established a new benchmark in usability. Building high-value business models that support more effective strategic and tactical decision-making is now within the reach of any management team.

## A Pillar of Process Excellence

iGrafx Process 2005 is uniquely designed to meet the specific needs of individual process initiatives while seamlessly integrating with other iGrafx components for a unified approach to process excellence. With a ready interface to the central process repository of iGrafx® Process Central® 2005, iGrafx Process 2005 serves as the foundation for any organization's process improvement initiatives. iGrafx will help you bridge the gap between the major organization constituencies – IT, process initiatives and business analysts - to ensure a level of process consistency, management, history and control across the enterprise, enabling process excellence.

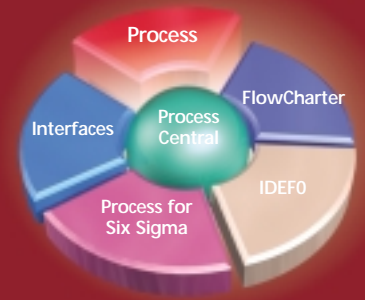
## Leverage Expertise for a Higher ROI

iGrafx tools are used by leading consultants throughout the world. These organizations use iGrafx to help companies realize the benefits of process excellence. For more information on our extensive list of partners, please visit [www.igrafx.com/affiliates](http://www.igrafx.com/affiliates).

Looking for that jumpstart with iGrafx? Take advantage of our training and consulting services that can help you apply the power of iGrafx even faster. For more information on upcoming courses, please visit [www.igrafx.com/services](http://www.igrafx.com/services).

## How Can We Help You Succeed?

To learn how you can get started with iGrafx, contact our experts at our offices.



*iGrafx is an integrated suite of software and services for process excellence.*

## European Headquarters

85716 Unterschleißheim  
Einsteinstraße 10  
Germany  
Tel.: +49 (0) 89 12471 100  
Fax: +49 (0) 89 12471 101  
[www.igrafx.de](http://www.igrafx.de)  
[info.de@igrafx.com](mailto:info.de@igrafx.com)

UK & Ireland Office  
5, St John's Lane  
London EC1M 4BH  
Tel: +44 (0) 20 7549 2851  
Fax: +44 (0) 20 7549 2852  
[www.igrafx.co.uk](http://www.igrafx.co.uk)  
[info@igrafx.org.uk](mailto:info@igrafx.org.uk)

Northern Europe  
Kærvej 32  
DK-2970 Hørsholm  
Denmark  
Tel: +45 (0) 45 76 20 21  
Fax: +45 (0) 45 76 41 21  
[www.igrafx.dk](http://www.igrafx.dk)  
[info@draware.dk](mailto:info@draware.dk)

## Representatives in:

USA–Global Headquarters  
United Kingdom / Ireland  
Denmark  
Austria  
Japan  
Australia  
Poland  
France  
Italy  
Mexico  
Korea

For contact details visit:  
[www.IGrafx.com/contact](http://www.IGrafx.com/contact)