

iGrafx® PROCESS²⁰⁰⁵ for six sigma™

iGrafx Process 2005 for Six Sigma is ideal for:

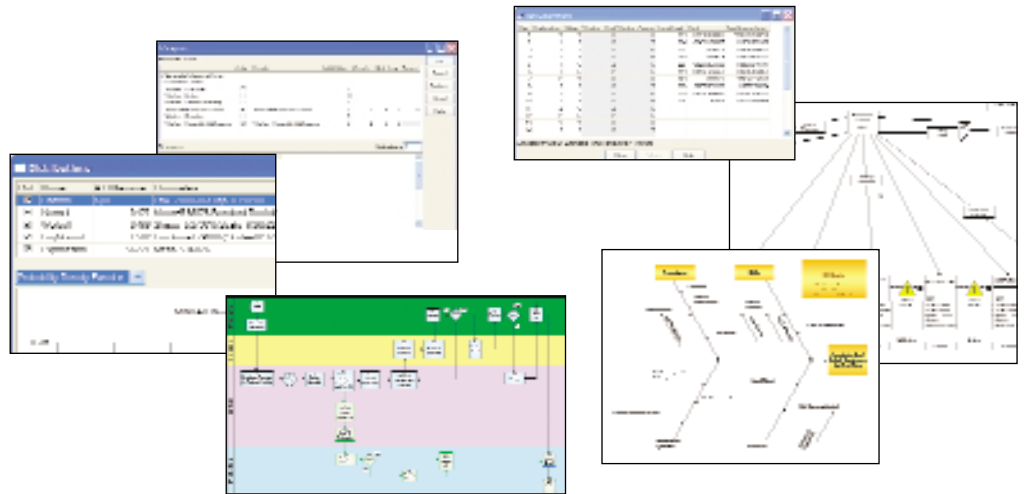
- Six Sigma Black Belts
- Six Sigma Master Black Belts
- Lean Six Sigma Experts

Meet your objectives in:

- Six Sigma
- Lean Six Sigma

A Proven Standard for Six Sigma

iGrafx® Process™ 2005 for Six Sigma is a leading process analysis tool to help Six Sigma professionals understand and improve their key processes. With features customized to Six Sigma, you will gain valuable insight into your processes to ensure quality, consistency and customer satisfaction. iGrafx Process 2005 for Six Sigma is fully compatible with the family of process excellence solutions from iGrafx.



Key Feature

Benefit

Design of Experiments (DOE)

Identify optimal changes by designing and performing full factorial experiments in a risk free environment

Data Fitting

Improve accuracy of results through statistical fitting of empirical data

Dynamic, Data-Driven Cause & Effect and Pareto

Reduce development time and increase usability of key analysis tools

Integration with MINITAB® and JMP®

Reduce project time and errors through a direct integration with critical Six Sigma tools

Lean Tools and Value Stream Mapping

Improve manufacturing and transactional processes using state-of-the art techniques

Integrated Reporting

Understand change impact in real time

Hierarchical Process Maps

Improve readability and comprehension through logical design

Intelligent Swimlane® Diagrams

Experience an ROI by minimizing time to create and edit process maps

Instant Web and Microsoft® Office® Publishing

Improve visibility and compliance through easy knowledge sharing

Seamless Integration with the iGrafx Family

Leverage and share organization-wide efforts and maintain central data management

A Framework for Process Excellence

For most organizations, success is measured by customer satisfaction and loyalty, shareholder value and the generation of corporate wealth. More and more companies are making significant improvements in these areas by adopting a Six Sigma approach to process excellence. Whether organizations are just starting Six Sigma or have integrated it tightly into their cultures, they need solutions that will grow with them through the adoption process.

iGrafx Process for Six Sigma is a powerful process analysis tool that provides a visual framework for connecting the performance driving data to their respective processes. The origins of hidden factories, bottlenecks and other drivers of time, cost and rework are rapidly exposed, enabling "quick hit" improvements. Later, high-value opportunities are more easily assessed and prioritized for action by team members. iGrafx Process 2005 for Six Sigma is a necessary component of every Six Sigma Black Belt toolkit.

iGrafx Process 2005 for Six Sigma models are a risk-free environment for conducting multi-factor, multi-level Design of Experiments (DOE). Not only can the potential dividends be qualified, but process simulation can expose changes that, in the real process, would have undesired impact. Through a seamless integration with both MINITAB and JMP, simulation results can be analyzed in greater detail – a feature unique to iGrafx.

Effectively communicating and promoting implementation of improved processes is required to ensure expected success is realized. iGrafx Process 2005 for Six Sigma enables you to link your process map to other data sources such as documents, web pages, data files and more. And with advanced Web output capabilities, you can quickly and easily publish your process map with all associated links maintained. Now everyone involved in the process has all the information at their fingertips.

For the Six Sigma organization, iGrafx Process 2005 for Six Sigma is the perfect solution for Black Belts. Green Belts and Yellow Belts will greatly benefit from iGrafx FlowCharter 2005 which enables them to seamlessly share files, information and knowledge with the Black Belt members of their project team.

A Pillar of Process Excellence

iGrafx Process 2005 for Six Sigma is uniquely designed to meet the specific needs of the Six Sigma and Lean Six Sigma initiatives while seamlessly integrating with other iGrafx components for a unified approach to process excellence. With a ready interface to the central process repository of iGrafx® Process Central® 2005, iGrafx Process 2005 for Six Sigma serves as a core component of any organization's process improvement initiative. iGrafx will help you bridge the gap between the major organization constituencies – IT, process initiatives and business analysts - to ensure a level of process consistency, management, history and control across the enterprise, enabling process excellence.

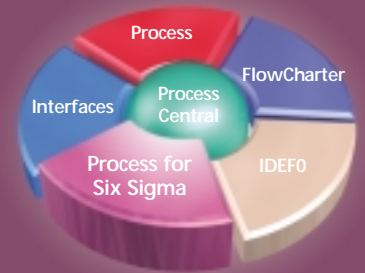
Leverage Expertise for a Higher ROI

iGrafx tools are used by leading consultants throughout the world. These organizations use iGrafx to help companies realize the benefits of process excellence. For more information on our extensive list of partners, please visit www.igrafx.com/affiliates.

Looking for that jumpstart with iGrafx? Take advantage of our training and consulting services that can help you apply the power of iGrafx even faster. For more information on upcoming courses, please visit www.igrafx.com/services.

How Can We Help You Succeed?

To learn how you can get started with iGrafx, contact our experts at our offices.



iGrafx is an integrated suite of software and services for process excellence.

European Headquarters

85716 Unterschleißheim
Einsteinstraße 10
Germany
Tel.: +49 (0) 89 12471 100
Fax: +49 (0) 89 12471 101
www.igrafx.de
info.de@igrafx.com

UK & Ireland Office
5, St John's Lane
London EC1M 4BH
Tel: +44 (0) 20 7549 2851
Fax: +44 (0) 20 7549 2852
www.igrafx.co.uk
info@igrafx.org.uk

Northern Europe
Kærvej 32
DK-2970 Hørsholm
Denmark
Tel: +45 (0) 45 76 20 21
Fax: +45 (0) 45 76 41 21
www.igrafx.dk
info@draware.dk

Representatives in:

USA—Global Headquarters
United Kingdom / Ireland
Denmark
Austria
Japan
Australia
Poland
France
Italy
Mexico
Korea

For contact details visit:
www.igrafx.com/contact